

**IMPORTANT!**  
**PLEASE READ BEFORE USE**  
 Cartridge should be kept at 21 °C  
 for best results

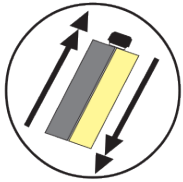


450ml cartridge: Dispensing gun: Newborn 435-XSP, 900ml cartridge: Dispensing gun: Albion B26-T900ml or similar 26:1 thrust ratio dispensing gun.

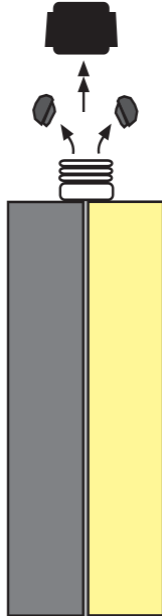
## INSTRUCTIONS FOR USING CARTRIDGE UNIT

**1**

**SHAKE WELL BEFORE USE**

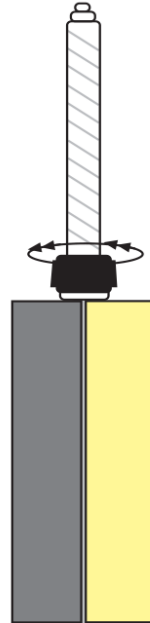


Unscrew locking nut and remove D caps



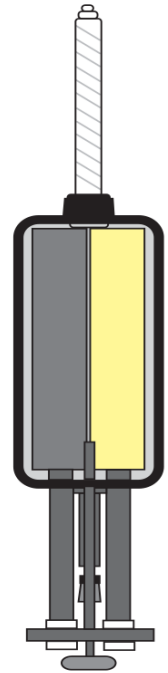
**2**

Place static mixer over cartridge neck and secure tightly with locking nut



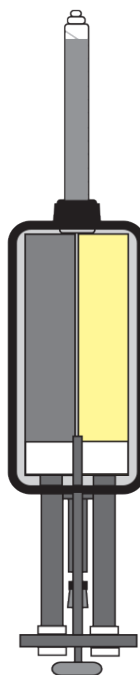
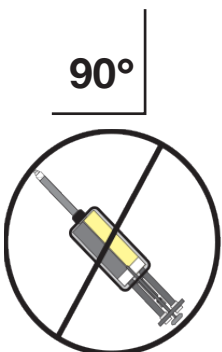
**3**

Pull back pistons in gun and securely load cartridge in cradle



**4**

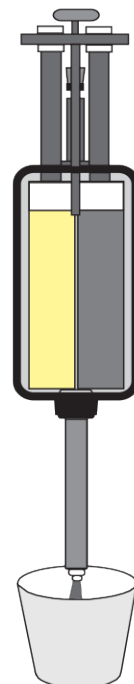
**IMPORTANT**  
 Hold gun straight up at a 90° angle and slowly pull trigger to purge air from unit. Drive material to top of mixer.



**5**

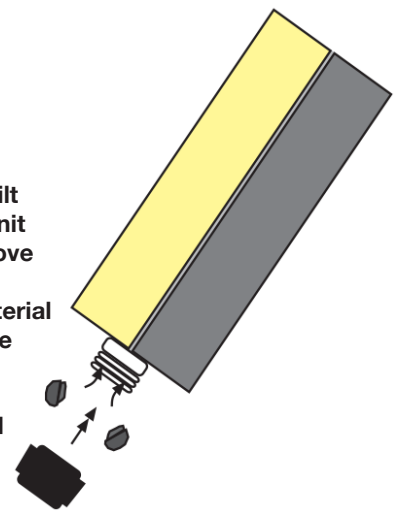
Tilt gun down and squeeze first 2-3 shots of material into a disposable cup, etc.

**IMPORTANT**  
 Gun should be tilted down whenever dispensing or when cartridge is being used.



**6**

To re-use cartridge, tilt cartridge unit down, remove mixer wipe excess material off cartridge neck, then replace D-caps and screw on lock nut. Use new mixer with next application.



**IMPORTANT!**  
**PLEASE READ BEFORE USE**  
 Cartridge should be kept at 21 °C  
 for best results



**DEFECT PREPARATION IS CRITICAL**

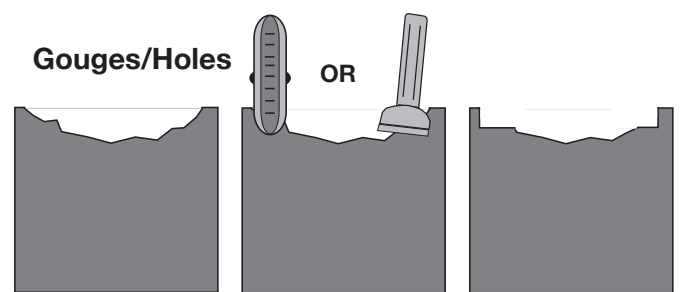
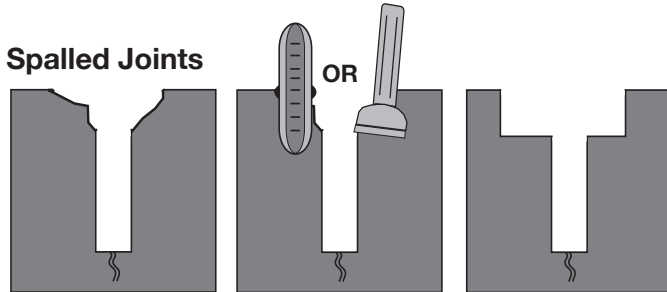
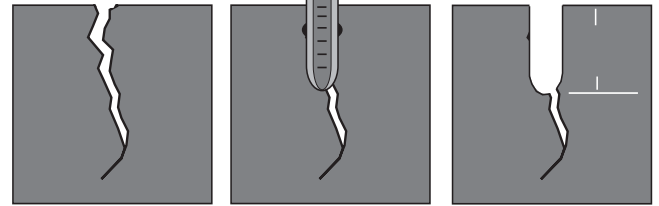
Spal-Pro 2000 can be used to permanently repair a variety of com-mon floor defects, but proper defect preparation is critical in ensur-ing that your repair will last. There are two important factors in repairing any floor defect:

**REPAIR AREA MUST BE DRY AND COMPLETELY CLEAN**  
**OUTSIDE OF REPAIR AREA SHOULD HAVE A VERTICAL EDGE... DO NOT FEATHER EDGE REPAIRS!**

Edges of repair can be defined using a concrete saw or right angle grinder with a diamond/abrasive blade. A cold chisel is also ac-ceptable. Vertical edge of repair area should be 50mm minimum or 19mm + (preferred). Any concrete that is not structurally sound should be removed along with any debris, dirt, oils, etc.

THESE ARE ABBREVIATED REPAIR INSTRUCTIONS. FOR MORE DETAILED REPAIR SPECIFICATIONS CONTACT LESA SYSTEMS 2017 LTD.

**Random Cracks**



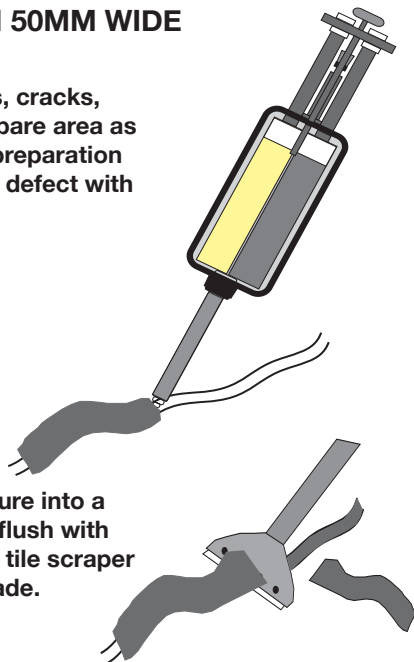
**INSTRUCTIONS FOR FILLING FLOOR DEFECTS**

**1 DEFECTS LESS THAN 50MM WIDE**

For narrower joints, cracks, pop-outs, etc., prepare area as outlined in defect preparation and slightly overfill defect with material.

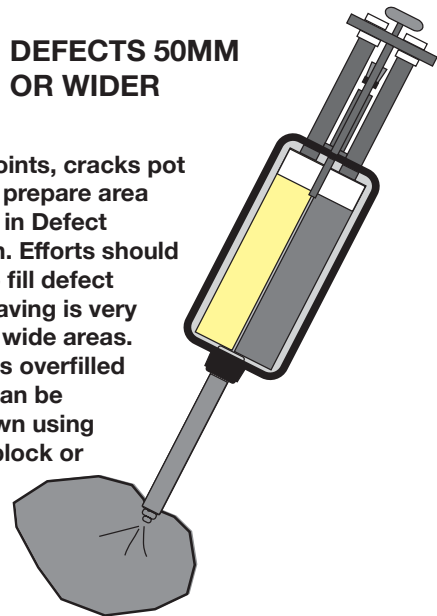
**2**

Allow material to cure into a solid and razor off flush with floor surface using tile scraper with disposable blade.



**3 DEFECTS 50MM OR WIDER**

For wider joints, cracks pot holes, etc., prepare area as outlined in Defect Preparation. Efforts should be made to fill defect flush as shaving is very difficult for wide areas. If material is overfilled slightly, it can be sanded down using a sanding block or sander at low speed. Joints and cracks should be monitored to ensure material does not sink and leave a concave profile. Apply additional material if necessary.



700 Great South Road, Penrose  
 P O Box 9826, Auckland, New Zealand  
[www.lesasystems.co.nz](http://www.lesasystems.co.nz)

Tel: 64 9 526 7136 Fax: 64 9 525 2139  
 Freephone: 0800 74 LESAs (0800 74 5372)  
 Email: [sales@lesasystems.co.nz](mailto:sales@lesasystems.co.nz)