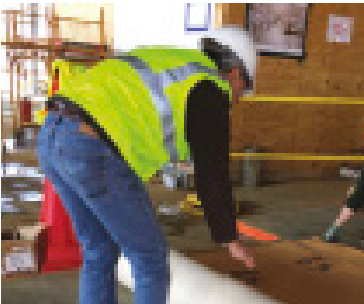


# SKUDO COMMERCIAL SYSTEM APPLICATION GUIDE



### Step 1

Start with the Skudo Mat in a corner of the area to be covered.

Roll the mat out 1-2 metres and align with a wall or edge of the slab to ensure a straight roll out.



### Step 2

Lift back the rolled out section at the starting point to begin applying the base coat directly onto the surface in a consistent coat with a minimum thickness of 250 micron wet. Apply it to the surface across the entire width of the Skudo Mat roll.



**Note:** Rough or textured surfaces will require a thicker application of base coat to ensure that there is complete coverage.



### Step 3

Lay the rolled out section of Skudo Mat back onto the wet base coat and press it in immediately using either the Skudo roller or a dry paint roller.

It is critical that the Skudo Mat is uniformly pressed into the base coat.

This now becomes the

anchor for the rest of the roll.



### Step 4

Continue to apply the base coat again in front of the roll.

When using the Skudo Notched Squeegee, ensure to pull the product away from the roll before back rolling.

Press in the Skudo Mat as you go, repeat process until the end of the roll. Once

applied, do not lift the mat.

**Note:** Ensure the base coat thickness is a minimum 250 micron wet.



### Step 5

Start the next pass with the Skudo Mat as per Step 1, overlapping the edge up to the dotted guide line. Roll out 1-2 metres of the mat for alignment.

This will ensure that the next section will remain straight and not veer off the line further down. The base coat can be used to adhere the

overlap. This makes the system more water tight which is important for projects that have not been dried in yet.



### IMPORTANT NOTE:

**Ensure base coat thickness is a minimum of 250 microns wet (.25mm).**

**Failure to apply correct thickness or properly 'Press' in the mat may result in a poor lamination and possible failure on peel.**



700 Great South Road, Penrose  
P O Box 9826, Auckland, New Zealand  
www.lesasystems.co.nz

Tel: 64 9 526 7136 Fax: 64 9 525 2139  
Freephone: 0800 74 LESA (0800 74 5372)  
Email: sales@lesasystems.co.nz

# SKUDO COMMERCIAL SYSTEM APPLICATION GUIDE



## PREPARATION

### Before applying the Skudo Mat System:

- Ensure Skudo is suitable for the substrate on which it will be applied.
- **Note:** Avoid applying Skudo to unsealed hardwood, carpet, rubber, painted surfaces, weak or latex based grout, unfilled travertine, pavers, high pH substrates (above 11.0), linoleums and vinyls that are effected by high pH of base coat.
- Ensure the surface pH is below 11.0 and moisture content is below 15%.
- Skudo requires that all concrete slabs be below 80% relative humidity before installation of the Skudo systems, this may require a test to be conducted on site.
- Ensure the surface temperature is above 4°C - 40°C.
- Do not apply the system externally if rain is likely within 24 hours.
- Do not allow slab to flood or be saturated before base coat has dried
- Ensure all densifiers, grouts, sealers, guards, epoxies etc. have been cured / burnished to their manufacturer specifications (touch dry is not sufficient).
- Ensure the area is clean and free from any foreign materials that will contaminate or compromise the base coat.
- Protect the area of any traffic for at least 3 hours to allow Skudo to fully dry (HT Mat System will take longer to dry, but will be able to handle foot traffic after 3 hours and machine traffic the next day).
- Ensure there is adequate ventilation.
- **Always spot test Skudo to specific job site conditions.**

## JOB ASSESSMENT CONSIDERATIONS

Know which grade of Skudo you are applying (Orange-HT Yellow-MT, Grey-LT), and adhere to limitations listed in the Product User Manual including:

### 1. Expected Construction Traffic

- Machinery - HT can handle moderate machinery, MT can handle infrequent and light machinery. No machinery on LT.
- Shoring & Scaffolding - Both HT and MT Mat can handle. Do not use shoring on LT.

### 2. Job Duration and Location

HT Mat is the only Skudo Mat approved for exterior use. The average on site life of Skudo Mats is as follows:

- HT Mat - 12 months interior, 9 months exterior
- MT Mat - 9 months interior only
- LT Mat - 6 months interior only

### 3. Water and Spill Resistance

- HT offers the highest resistance of the three products, MT offers moderate and LT the least of the three.

## SPREAD RATES

**It is critical that the Skudo Base Coat be applied consistently to a thickness of at least 250 micron wet.**

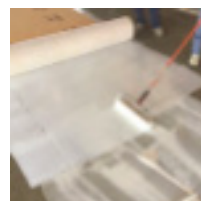
The spread rates of the base coat will vary due to weather, how porous the substrate is on which it will be applied, and the application method (roller or notched squeegee).

- On flat sealed continuous substrates the Base Coat will yield approximately 15sqm per 3.8 Litres.

- On raw concrete or substrates with a lot of undulation or grout lines the yield can drop to 11sqm - 15sqm per 3.8 Litres.
- One can of adhesive spray will cover 4 ½ rolls of Mat edges

**Note:** For a detailed explanation of Skudo Commercial Mat System usage, application process and limitations, please see our website which contains a step-by-step application video.

## BASE COAT APPLICATION METHODS AND TOOLS



**Notched Squeegee & Back Roll**  
\*\* Recommended by Skudo for most accurate application

### Tools

- (1) Skudo Notched Squeegee
- (1) 450mm Skudo Roller Kit (For Back Rolling)
- (1) 450mm Skudo Roller Kit (For pressing mat down)

<b>Application Rate</b>	<b>Better</b>	<b>**</b>
	930sqm - 1115sqm	

<b>Accuracy</b>	<b>Best</b>	<b>***</b>
-----------------	-------------	------------

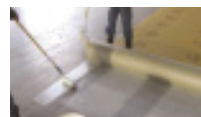
<b>Preparation</b>	<b>Least</b>	<b>***</b>
--------------------	--------------	------------

Thoroughly soak Back roller cover in Base Coat Sweep debris off area

<b>Clean Up</b>	<b>None</b>	<b>***</b>
-----------------	-------------	------------

Throw away roller covers when done  
Overnight - submerge roller in base coat

<b>Crew Needed</b>	3 Man Crew	
--------------------	------------	--



**Gauged Roller**

### Tools

- (1) 225mm Gauged Roller Kit
- (1) 450mm Skudo Roller Kit

<b>Application Rate</b>	<b>Good</b>	<b>*</b>
	325sqm - 465sqm	

<b>Accuracy</b>	<b>Better</b>	<b>**</b>
-----------------	---------------	-----------

<b>Preparation</b>	<b>Least</b>	<b>***</b>
--------------------	--------------	------------

Sweep debris off area

<b>Clean Up</b>	<b>None</b>	<b>***</b>
-----------------	-------------	------------

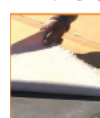
Throw away roller covers when done  
Overnight - submerge roller in base coat

<b>Crew Needed</b>	2 Man Crew	
--------------------	------------	--

## PATCHING

Should the Skudo Mats require patching, lift up the tear, apply fresh base coat underneath and press the mat back down. Alternatively, you may apply a new section of the Skudo Mat with base coat over the hole.

## REMOVAL



When ready to remove the Skudo Mat, work with a partner and simply lift a corner and peel it back at a 45 degree angle. To make the process easier and faster, nip the edge at 600mm - 900mm widths and tear it into thinner strips. Dispose of the mat in local refuse facilities.

**Note:** Do not remove the mat when the temperature is below 4°C.

**Recommended:** Use the Skudo Mat Puller to give more leverage and make the removal process easier.



700 Great South Road, Penrose  
P O Box 9826, Auckland, New Zealand  
www.lesasystems.co.nz

Tel: 64 9 526 7136 Fax: 64 9 525 2139  
Freephone: 0800 74 LESA (0800 74 5372)  
Email: sales@lesasystems.co.nz